

RETRO-FITTING OF THE 2893 ROLLER PLATE SYSTEM

IMPORTANT: NEVER STAND IN FRONT OF A TRAP MACHINE. THE TRAP MACHINE MUST BE TURNED OFF AND THE SPRING RELEASED BEFORE ENTERING THE TRAP HOUSE. NEVER ATTEMPT TO MAKE ANY ADJUSTMENT WHEN THE THROW ARM IS COCKED.

1. The template must be used for drilling the singles' roller plate hole, for the purpose of centering the hole further away from the clay targets.
2. Remove the existing roller plate system from your machine.
3. Remove the #3 Guide Spring.
4. Place the template into position, as shown in Diagram C13, and align the 3/8" template hole with 1/4" roller plate hole.
5. Clamp the template to the Top Plate: use a "C" clamp.
6. Keep your drill perpendicular to the template and drill out the hole.
7. Remove the template.
8. The template is not used for the doubles' roller plate hole.
9. The #3 Guide Spring is no longer used.
10. The template needs to be returned to Pat-Trap. Thank you.

POSITIONING OF THE ROLLER PLATES

From Serial # 2893

The roller plates must be positioned as shown in Diagram 81. The measurement to both of the roller plates is taken from the face of the kingpin shaft to the face of the roller shaft.

If an adjustment is necessary, then the roller plate stop will have to be turned until the roller plate stops at the given measurement.

To set the position of the roller plate stop:

1. Remove the extension spring
2. Adjust jam nut "A" so that when the nut "Y" is tightened the roller plate will pivot freely: with no more than 1/64" of up/down play between the roller plate shaft and jam nut "A".
3. Use an adjustable wrench to turn the roller plate stop to the correct position.
4. Hold back on the roller plate stop with the adjustable wrench while tightening the nut "Y". Torque nut "Y" to 35-40 ft/lbs.
5. Tighten jam nut "B" against nut "Y" while holding back against the roller plate stop with the adjustable wrench. Torque jam nut "B" to approximately 15 ft/lbs.
6. Check for free pivot of the roller plate after tightening.
7. Check the measurement to each roller plate.
8. Reconnect the extension spring.

RETROFITTING OF THE ROLLER PLATES

If this is a new installation (retrofit) to your machine, see Diagram 83 to adjust the cant of both roller plates. If an adjustment is necessary, set a pair of large water pump pliers (channel lock) vertically against the roller plate shaft and carefully bend in the direction needed.

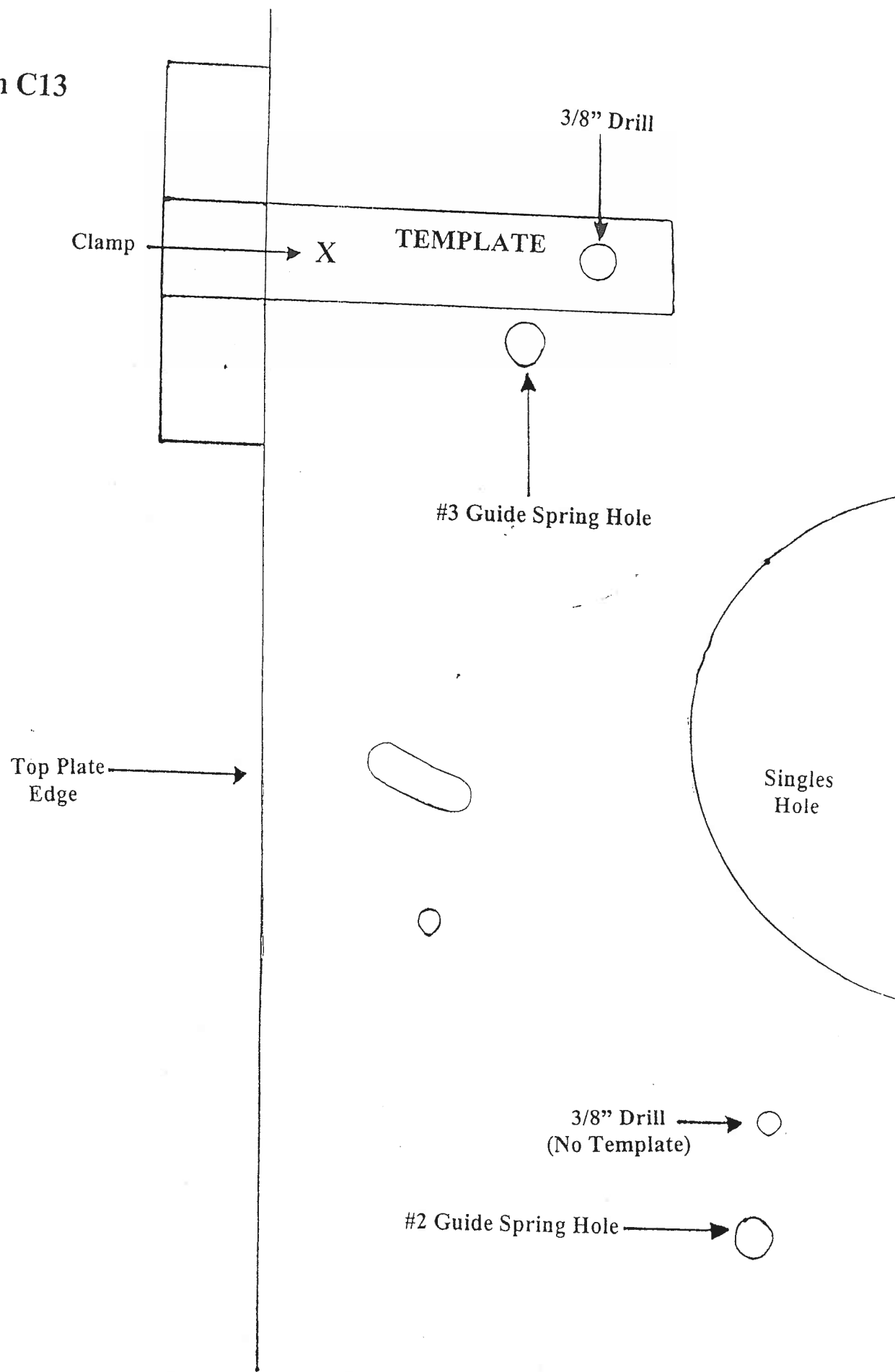
This adjustment needs to be made with the extension spring connected, and is the final step in the installation of the roller plate.

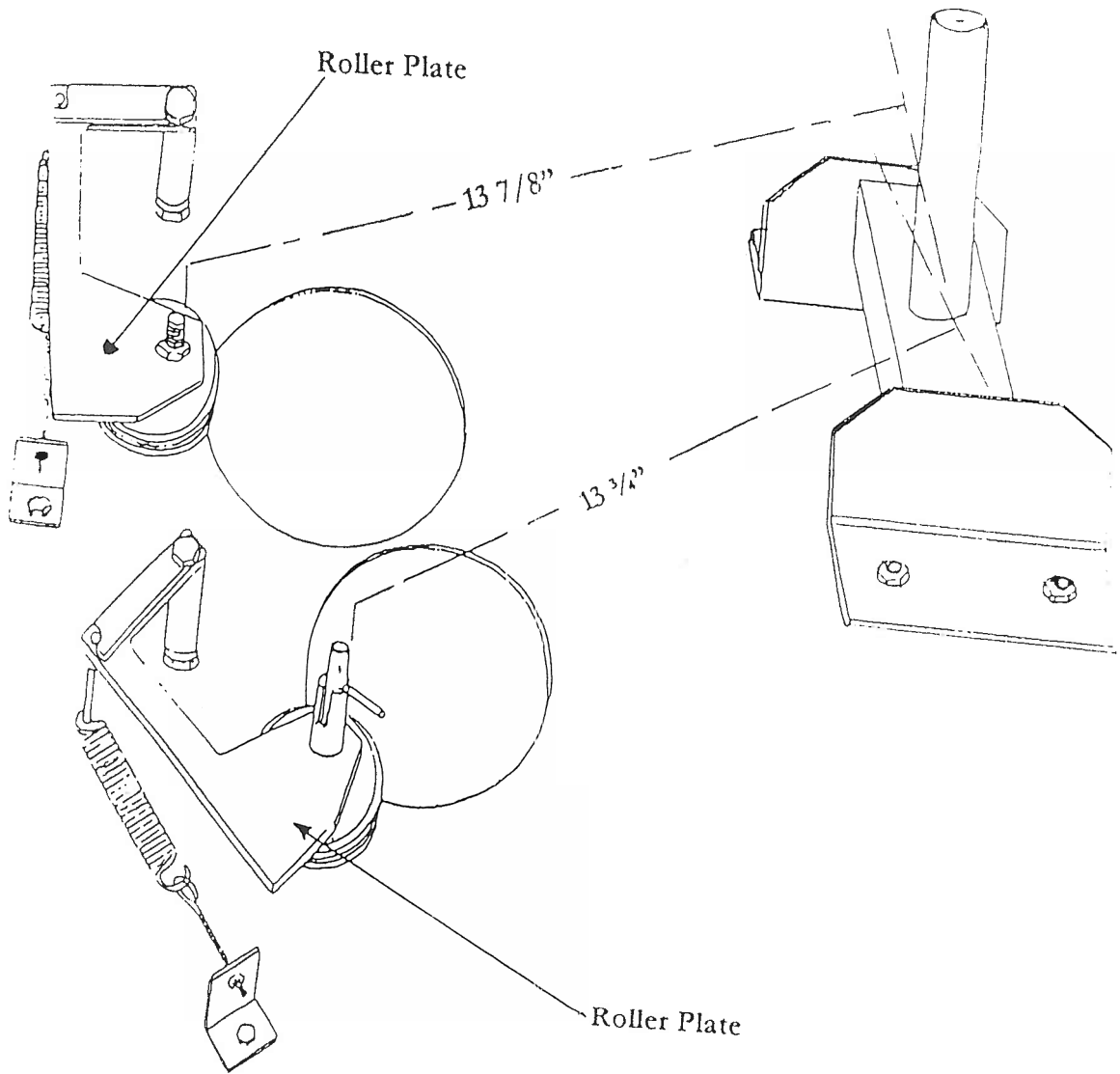
SETTING SINGLES/DOUBLES

For Singles, move the set pin to the lower (Singles) notch.

For Doubles, move the set pin to the upper (Doubles) notch. See Diagram 82

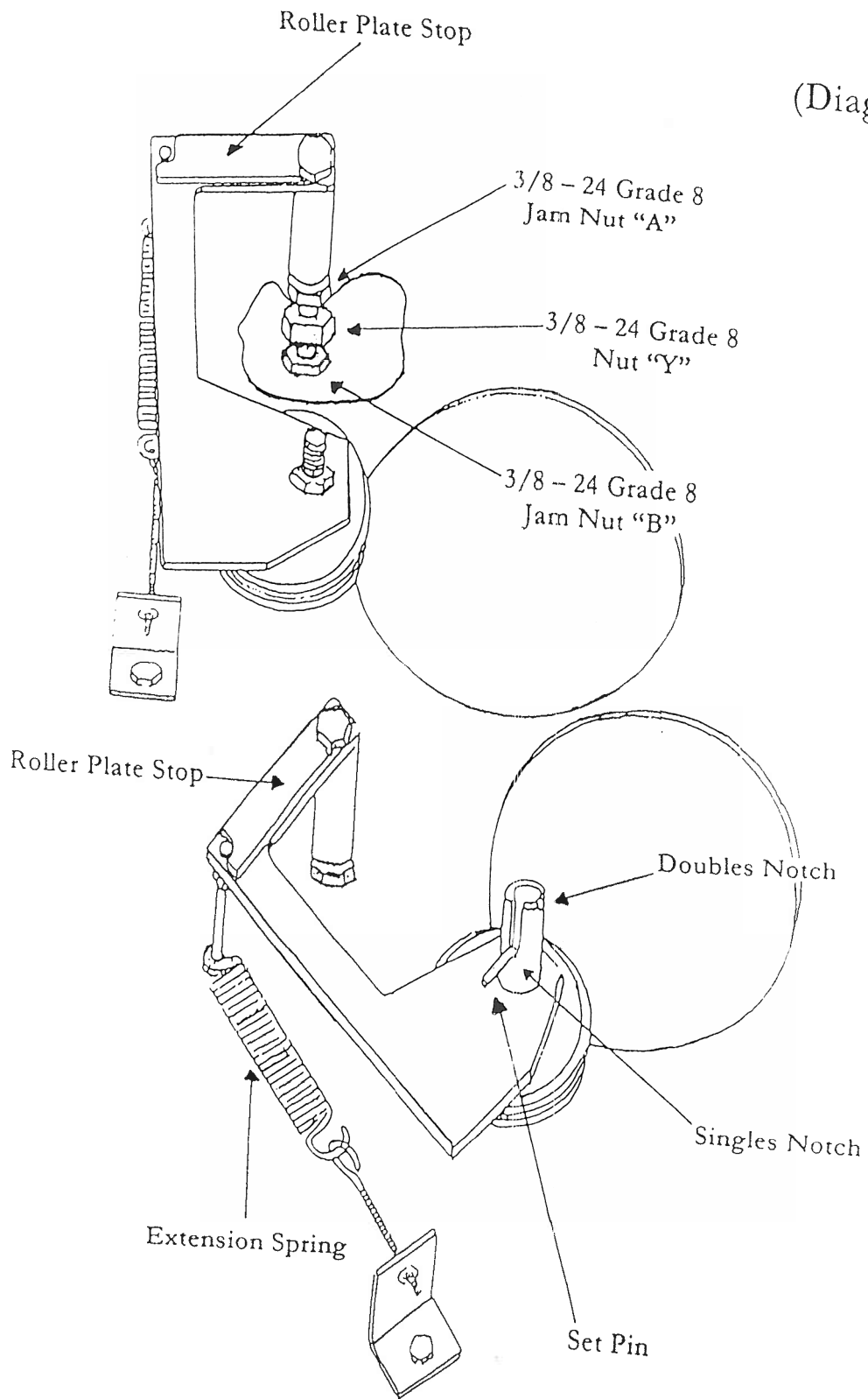
Diagram C13





(Diagram 81)

(Diagram 82)



(Diagram 83)

