



Manual/Parts Lists  
Provided By

Golden West Industries  
750 Arroyo Ave  
San Fernando, CA 91340  
800-548-5444 (Outside CA)  
818-365-3946 (Inside CA)  
818-365-8725 (Fax)  
[www.goldenwestind.com](http://www.goldenwestind.com)  
[goldenwestind@msn.com](mailto:goldenwestind@msn.com)

Sales, Parts, Repairs, Rentals, Installation  
Trap, Skeet and Sporting Clays  
Pay and Play Card System  
Voice Release

Beomat, Due Matic, Lincoln Traps,  
Pat Trap, Winchester



# **BEOMAT**

## **Golden West Industries**

750 Arroyo Ave.  
San Fernando, CA 91340  
(818) 365-3946  
Outside of California  
1-800-548-5444  
FAX: (818) 365-8725

VIEW, PART#.	DIM.	NAME OF PART.	VIEW, PART#.	DIM.	NAME OF PART.
1	2000-0	M 12 X 3			
2	2001-7	M 12			
3	2002-4	13 X 24 X 4			
4	2003-6	15 X 1			
5	2004-13	1/2" X 3/16"			
6	2005-13	1/2" X 3/16" S			
7	2006-0	M6 X 16			
8	2007-4	6.4 X 12 X 1.5			
9	2008-14	1/2" X 3/16"			
10	2009-1	M10 X 50			
11	2010-7	GE 12 C			
12	2011-3	M8			
13	2012-8				
14	2013-10				
15	2014-8				
16	2015-8				
17	2016-10	18.6			
18	2017-10	18.6-15.2			
19	2018-10	20MM			
20	2019-8				
21	2020-10	15MM			
22	2021-10	22MM			
23	2022-8				
24	2023-10	BK 4			
25	2024-5	M6 X 10			
26	2025-7	UCF205 J			
27	2026-10	18,6MM			
28	2027-10				
29	2028-10				
30	2029-8				
31	2030-15	RATIO 64-1			
32	2031-15				
33	2032-5	M5 X 5			
34	2033-5	M5 X 12			
35	2034-10				
36	2035-10				
37	2036-0	M6 X 20			
38	2037-10				
39	2038-17				
40	2039-18	80 X 5			
41	2040-11	4 X 16			
42	2041-2	M4 X 15			
43	2042-10				
44	2043-10				
45	2044-10	0.25kw			
46	2045-19	8 X 31			
47	2046-14	1/2" X 3/16			
48	2047-5	8 X 16			
49	2048-10				
50	2049-8-9	15MM			
51	2050-8-9	10MM			
52	2051-8				
53	2052-1	M8 X 30			
54	2053-10				
55	2054-7				
56	2055-1	10 X 25			
57	2056-8-9	5MM			
58	2057-8-9	2MM			
59	2058-5	10 X 22 X 2			
60	2059-4	13 X 17 X 0.6			
61	2060-3	M10			
62	2061-10	18.6			
63	2062-10	18-6			
64	2063-10				
65	2064-10				
66	2065-10				
			67	2066-4	5.3 X 10 X 1
			68	2067-2	M5 X 16
			69	2068-2	M5 X 9
			70	2069-1	M8 X 30
			71	2070-4	8.4 X 16 X 1.5
			72	2071-3	M8
			73	2072-9	
			74	2073-8-9	
			75	2074-8	
			76	2075-4	13 X 24 X 1.7
			77	2076-3	M12 X 6
			78	2077-8	
			79	2078-8	
			80	2079-8	
			81	2080-8	
			82	2081-8	
			83	2082-8	
			84	2083-3	M12
			85	2084-0	M12 X 35
			86	2085-0	M6 X 30
			87	2086-0	M6 X 20
			88	2087-15	RATIO 90:1
			89	2088-5	VACANT #
			90	2089-3	M12 X 10
			91	2090-8	
			92	2091-8-9	
			93	2092-2	M4 X 30
			94	2093-10	
			95	2094-10	
			96	2095-10	.12KW
			97	2096-8	
			98	2097-19	5 X 30
			99	2098-4	13 X 24 X 2
			100	2099-10	
			101	2100-0	VACANT #
			102	2101-0	M12 X 30
			103	2102-7	M30208
			104	2103-7	30208
			105	2104-8	
			106	2105-8	VACANT #
			107	2106-21	50 X 80 X 10
			108	2107-8	
			109	2108-8	
			110	2109-3	KM8
			111	2110-8-9	
			112	2111-8-9	
			113	2112-4	C13
			114	2113-8	
			115	2114-	VACANT#
			116	2115-	VACANT#
			117	2116-0	M10 X 20
			118	2117-4	10 X 18 X 2
			119	2118-0	
			120	2119-8-9	
			121	2120	VACANT#
			122	2121-	VACANT#
			123	2122-1	M10 X 50
			124	2123-21	
			125	2124-1	M8 X 20
			126	2125-1	M5 X 16
			127	2126-8-9	
			128	2127-15	
			129	2128-9	RATIO 45:1
			130	2129-8	SKEET A-54
			131	2130-9	TRAP A-56
			132	2131-8	D/D-95 D/D-118
					WASHER
					SCREW
					SCREW
					BOLT HEX HEAD
					WASHER
					NUT
					BASE PLATE SKEET
					TURN BUCKLE
					PART OF MAIN CHASSY
					WASHER
					NUT
					BRACKET/TURN BUCKLE
					TURNTABLE
					CON. ROD, HOR. DRIV.
					SPRING SUPP. UPPER
					SPRING
					SPRING SUPP LOWER
					NUT - NYLOCK
					ALLEN BOLT
					ALLEN BOLT
					ALLEN BOLT
					REDUCT. GEAR
					NUT
					PULLEY/VERT.MOVE
					GREASE FITTING
					SCREW
					COVER
					RUBBER SEAL
					EL. MOTOR 1800rpm
					SPAC./VERTICAL DRIVE
					KEY
					WASHER
					ELECT. JNCT BOX
					ALLEN BOLT
					BEARING
					BEARING RACE
					HOUSING/TURNTABLE
					SEAL
					SPACER
					SPACER
					SPANNER NUT
					BELT COVER
					CHASSIS
					CONE WASHER
					SUPPORT BRACT (TRAP)
					ALLEN BOLT
					WASHER
					REDUCT. GEAR BRKT
					BOLT
					VENT PLUG/ LATE/PR..
					CARIAGE BOLT
					SELF TRAPPING BOLT
					PIVOT BRACKET
					REDUCT. GEAR
					DRIVE BELT (G-7560)
					DRIVE BELT (G-7570)
					BELT PULLEY SKEET
					BELT PULLEY TRAP

## VIEW, PART#. NAME OF PART.

## VIEW, PART#. DIM.

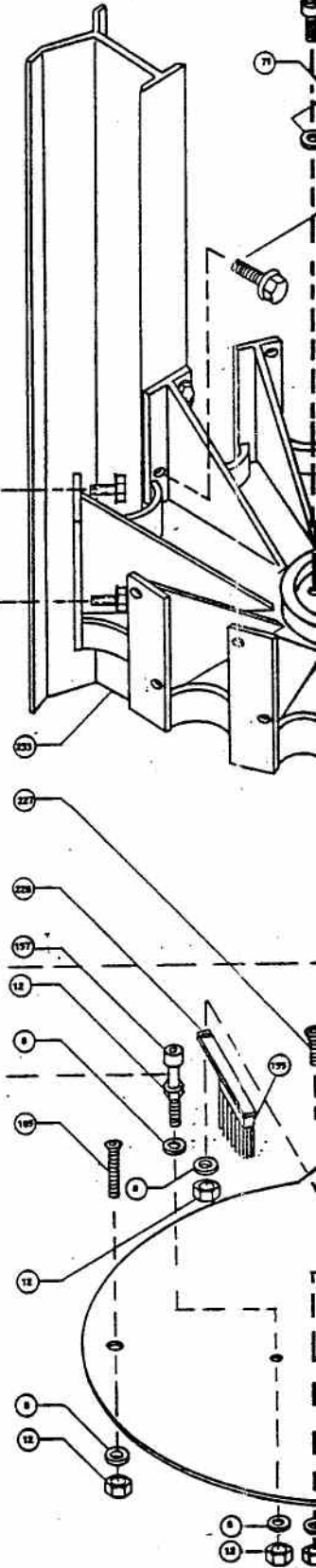
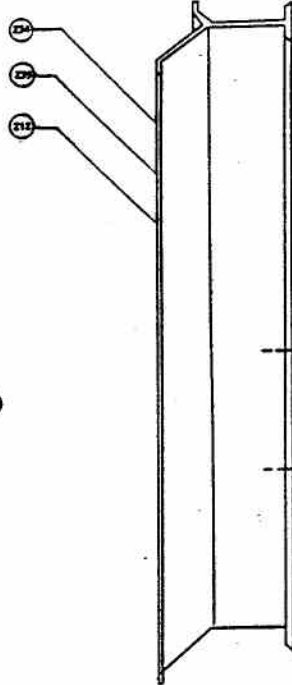
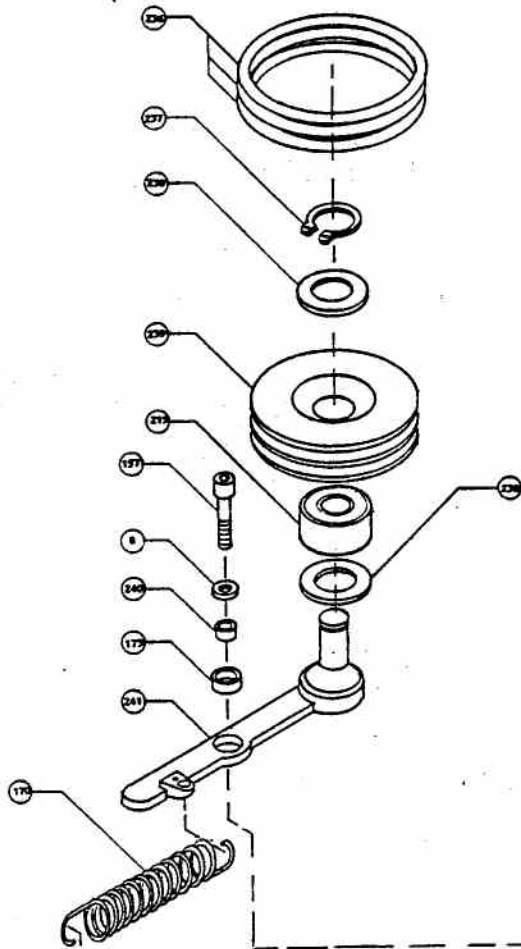
## NAME OF PART.

133	2132-10		SCREW (PLASTIC)	197	2196-8-9		BRAKE BAND
134	2133-10	0.25 KW	EL. MOTOR 1800RPM	198	2197-8-9		BEARING PLATE
135	2134-10		COVER	199	2198-7	AS-25	SPRAGUE
136	2135-10		UBBER SEAL	200	2199-0	M8 X 30	BOLT ALLEN
137	2136-10		TRAFO (BOX ONLY)	201	2200-1	10 X 25	BOLT HEX HEAD
138	2137-1	VACANT		202	2201-8-9		EXCENTER
139	2138-10	24 VDC	COUNTER	203	2202-11	6 X 40	TENSION PIN
140	2139-10	VACANT		204	2203-19	8 X 63	KEY
141	2140-2	M4 X 25	SCREW	205	2204-8-9		MAIN SHAFT
142	2141-4	4.3 X 8 X 1	WASHER	206	2205-8-9		SPRING CONNNECTOR
143	2142-3	M4	NUT	207	2206-8-9		STUD
144	2143-3	VACANT		208	2207-4		SPRING WASHER
145	2144-4	VACANT		209	2208-4		BRASS WASHER
146	2145-8-9		STUD (FOR GUIDE RAIL)	210	2209-4		SPRING WASHER
147	2146-8-9		TREAD BUSHING	211	2210-5	M8 X 25	SET SCREW (PIN TYPE)
148	2147-8-9		GUIDE RAIL	212	2211-8-9	820MM	900 MAG. PROFILE
149	2148-8-9		LAUNCHING TABLE	213	2212-8-9		MAGAZINE LOCK
150	2149-1	VACANT		214	2213-3		NUT
151	2150-8-9		BRACKET	215	2214-7	M16	BEARING
152	2151-8-9	M8	LINK	216	2215-8-9	6002 2 RS	THREADED ROD
153	2152-4	9 X 28 X 2	WASHER	217	2216-8-9	M16	SPRING TENSION ROD
154	2153-1	M8 X 20	BOLT HEX HEAD	218	2217-4	20 X 52 X 8	WASHER
155	2154-8-9		BRUSH ONLY	219	2218-8-9	LT-16	EYELET
156	2155-8		BRACKET	220	2219-8-9	(A) (B) (C)	M/ SPRING SP./COLOR
157	2156-0	M6 X 35	ALLEN BOLT	221	2220-20		BUSHING
158	2157-10		ELECTRO MAGNET	222	2221-20		BUSHING
159	2158-8-9		ELEVATOR	223	2222-6	A30	LOCK CLIP
160	2159-2	M3 X 30	SCREW	224	2223-8-9		DRIVE WHEEL
161	2160-4	3.2 X 6 X 0.5	WASHER	225	2224-8-9		MAGAZINE SHAFT
162	2161-8		BRACKET	226	2225-0	M8 X 35	ALLEN BOLT
163	2162-10		MICRO SWITCH	227	2226-0	M6 X 10	BOLT (COUNTER SUNK)
164	2163-4	3.2 X 6 X 0.4	LOCK WASHER	228	2227-8-9		BRUSH W/BRACKET
165	2164-3	M3	NUT	229	2228-8-9		GUIDE FINGER
166	2165-0		SWITCH HOUSING	230	2229-8-9		MAGAZINE PLATE
167	2166-0	M8 X 20	ALLEN BOLT	231	2230-8-9		LEAF SPRING BRACKET
168	2167-2	M6 X 25 (30)	BOLT FOR L-ARM	232	2231-8-9		LEAF SPRING
169	2168-0	M10 X 30	ALLEN BOLT	233	2232-8-9		MAGAZINE STRUCTURE
170	2169-8-9		SPRING	234	2233-8-9	365MM	400 MAG. PROFILE
171	2170-13		SHOWN F/REF. ONLY	235	2234-8-9	600MM	700 MAG. PROFILE
172	2171-13	21/4-13	LOCK CLIP	236	2235-18		O-RING
173	2172-20		BUSHING	237	2236-6	A-15	LOCK CLIP
174	2173-13		RECEIVER	238	2237-4	15 X 26 X 2	WASHER
175	2174-13		CHAIN LOCK	239	2238-17		TARGET RET./WHEEL
176	2175-17		LOAD EQUALIZER	240	2239-8-9		SPACER
177	2176-8-9		BRACKET (THREADED)	241	2240-8-9		PIVOT ARM
178	2177-8-9		BRACKET	242	2241-9		SUPP. BRKT (SKEET)
179	2178-7	6000 2 RS	BEARING	243	2242-8-9	6 X 80	TENSION PIN
180	2179-1	M10 X 30	BOLT HEXHEAD	244	2243-8		MAIN EL. BOX (TRAP)
181	2180-1	M6 X 30	BOLT HEXHEAD	245	2244-9		MAIN EL. BOX (SKT)
182	2181-8-9		PARALLEL ARM BRKT	246	2245-8		CONTROL BOX MJT
183	2182-8-9		P-ARM (LOWER)	247	2246-8		CONTROL BOX MT
184	2183-8-9		P-ARM (UPPER)	248	2247-10	IPM 45060	ST. RELAY 1800rpm
185	2184-0	M6 X 16	BOLT (P-ARM ASSY)	249	2248-10	80 MF	CAPAC. 1200rpm M
186	2185-8-9		LAUNCHING ARM	250	2249-10	120 MF	CAPAC. 1800rpm M
187	2186-0	M6 X 22	BOLT (COUTERSUNK)	251	2250-10	24V	RELAY
188	2187-8-9		DRIVEMEMBER	252	2251-10	12V	RELAY
189	2180-0	M8 X 25 (12.9)	ALLEN BOLT 8-GRADE	253	2252-8-9	400	MAGAZINE COMPL.
190	2189-0	M8 X 25	ALLEN BOLT	254	2253-8-9	700	MAGAZINE COMPL.
191	2190-8-9		FLANGE	255	2254-8-9		DRIVE COMPL.
192	2191-8-9		BELT PULLEY	256	2255-8		HORIZ. DRIVE COMPL.
193	2192-7	6006 2RS	BEARING	257	2256-10		RELEASE BOX (SKEET)
194	2193-8-9		L-ARM CARRIER	258	2257-10		RELEASE BOX (TRAP)
195	2194-8-9		CAM	259	2258-10		FAN COVER LARGE
196	2195-0	M6 X 45	ALLEN BOLT	260	2259-10		FAN COVER SMALL
				261	2260-10		FAN (LARGE)

VIEW, PART#. DIM. NAME OF PART.

VIEW, PART#. DIM. NAME OF PART.

VIEW, PART#	DIM.	NAME OF PART.	VIEW, PART#	DIM.	NAME OF PART.
262	2261-10	FAN (SMALL)	289	2288-10	TIMER INT. SKEET 12V
263	2262-21	PINION SEAL	290	2289-10	FUSE 500Ma (0.5 AMP)
264	2263-21	SHAFT SEAL	291	2290-8-9	MAGAZINE COMPLETE
265	2264-21	TOP COVER SEAL	292	2291-8-9	SAFEGUARD
266	2265-21	SHAFT SEAL	293	2292-2	SCREW F/COV. PLATE
267	2266-10	CAPASITOR	294	2293-8-9	COV. PLATE F/CLUTCH
258	2267-10	RELAY SOCKET	295	2294-8	VERT. DRIVE COMPL
239	2268-10	110V-24V DC TRANSFORMER	296	2295-2	SCREW/ BUTTON BOX
270	2269-10	SWITCH	297	2296-10	24V TIMER
271	2270-10	IND.R LIGHT ASSY	298	2297-10	110V SKEET TIMER
272	2271-10	IND. LIGHT BULB	299	2298-10	110V AC RELAY
273	2272-10	INTERRUPTOR	300	2299-10	110V AC COUNTER
274	2273-10	10 AMP OVER LOAD BREAKER	301	2300-7	COMPL P-ARM ASSY
275	2274-10	3 AMP OVER LOAD BREAKER	302	2301-10	RADIO RELEASE
276	2275-10	SWITCH SNAP ACT.	303	2302-10	EXTRA TRANSMITTER
277	2276-10	RUBBER CAP	304	2303-10	CTRL BOX/ (SHELL)
278	2277-10	SKT/TRP TOP COV.,SPEC.T/S	305	2304-10	MAIN EL/BOX (SHELL)
279	2278-10	BOX (BOTTOM ONLY)	306	2305-10	110V REL. CORD SKT
280	2279-10	18/2-SJ(100') TRAP (CORD ONLY)	307	2306-10	INTERRUPTER PEG
281	2280-10	18/3-SJ(100') SKEET (CORD ONLY)	308	2307-6	C - CLIP
282	2281-10	18/2-SJ(100') TRP RELEASE CMPL	309	2308-10	HUB
283	2282-10	18/3-SJ(100') SKT RELEASE CMPL	310	2309-6	C - CLIP
284	2283-10	TRAP TOP COV. (W/SWI.)	311	2310-10	ROCKER
285	2284-10	SKEET TOP COV. (W/SWI.)	312	2311-10	SWITCH 483(MICRO)
286	2285-10	MIDGET TWIST LOCK(F)	313	2312-10	2 MIN INTER. 3354 MOTOR
287	2286-10	MIDGET TWIST LOCK(M)	314	2313-10	10' - 1.5 X 5 CORD 5 CONDUCTOR
288	2287-10	IPM-449 ST. RELAY 1200rpm M	315	2314-10	10' - 1.5 X 3 CORD 3 CONDUCTOR

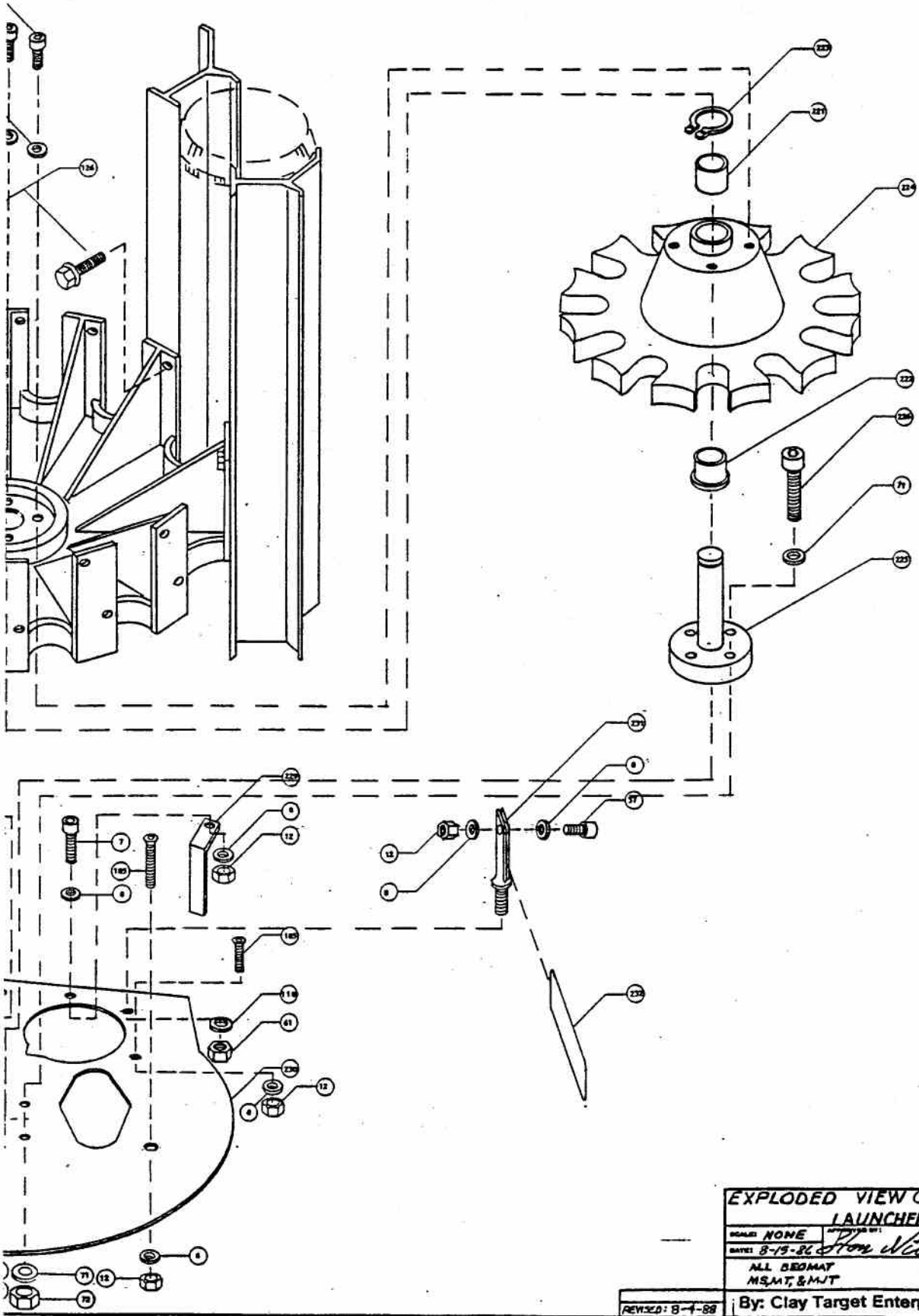


23 400 TARGET MAGAZINE (COMPLETE)

24 700 TARGET MAGAZINE (COMPLETE)

25 900 TARGET MAGAZINE (COMPLETE)





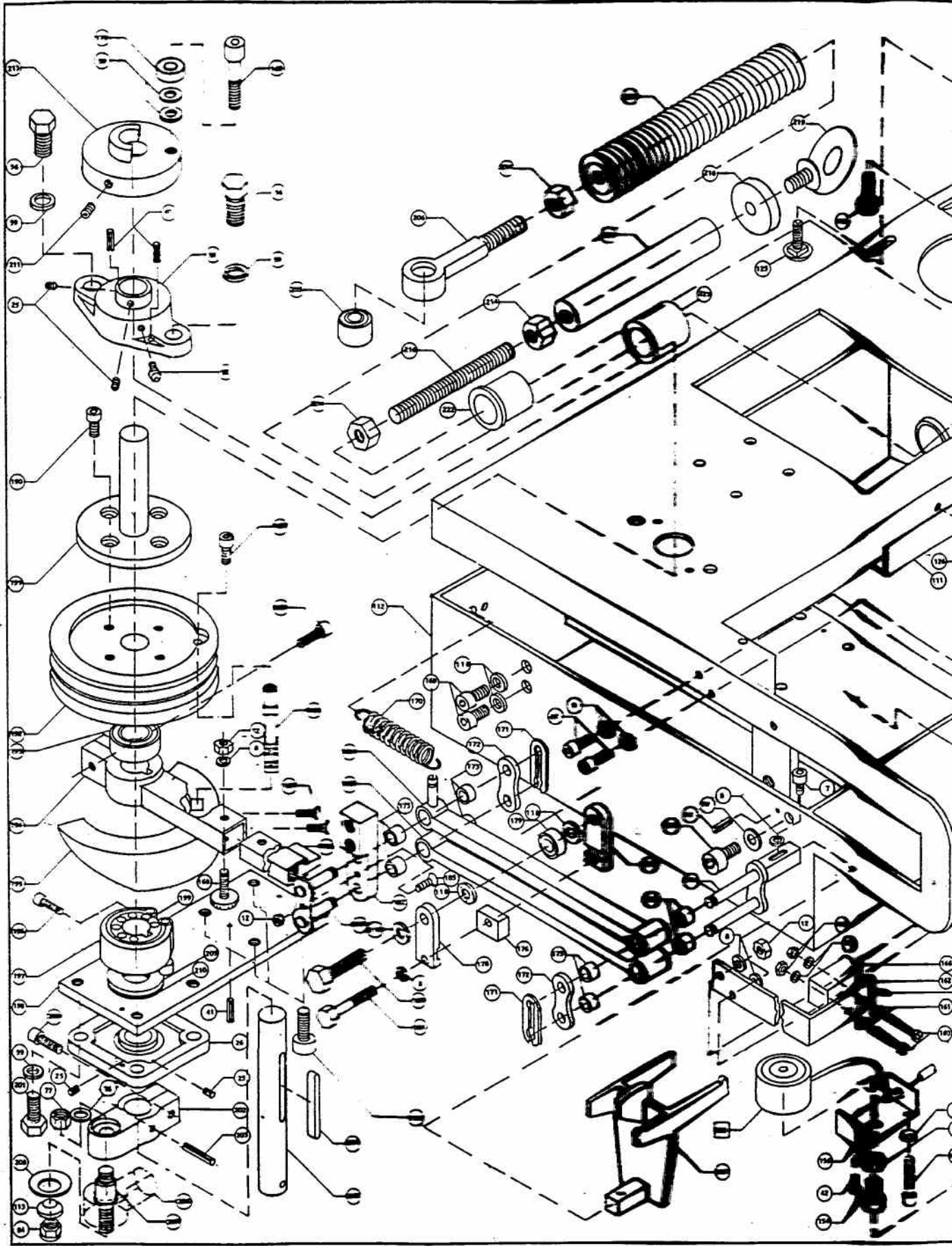
EXPLODED VIEW OF MAGAZINE,  
LAUNCHER SUBASSEMBLY

SCALE: NONE	APPROVED BY: <i>Tom Wilson</i>	DESIGNED BY: <i>Steve</i>
DATE: 8-15-86		REVISED: 7-5-87
ALL DIMENSIONS IN INCHES & MILLIMETERS		

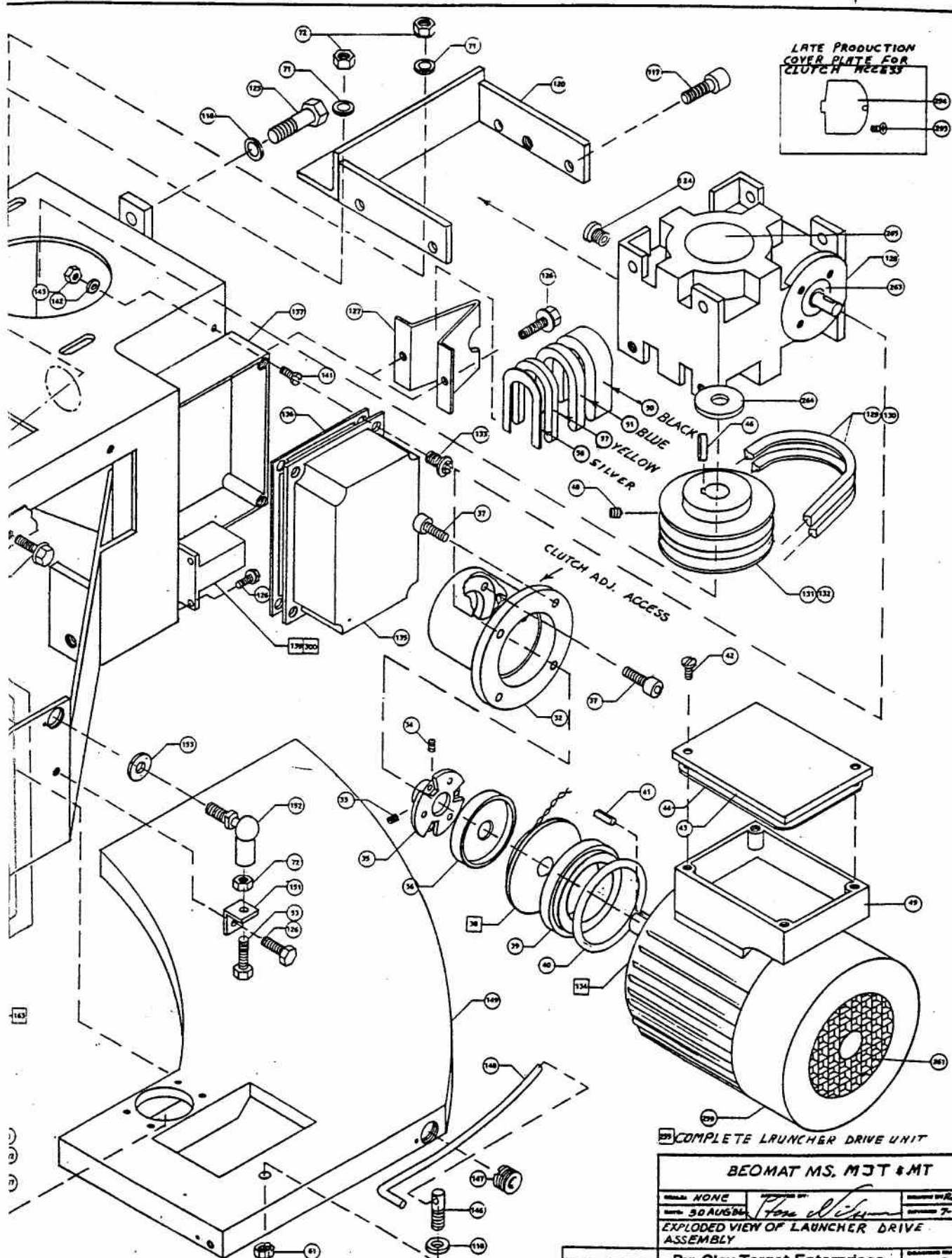
REVISED: 8-4-88

By: Clay Target Enterprises

1



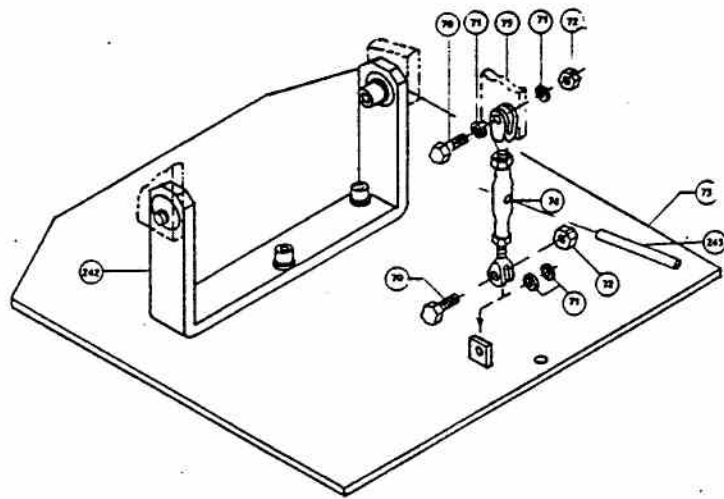




291 COMPLETE LAUNCHER DRIVE UNIT

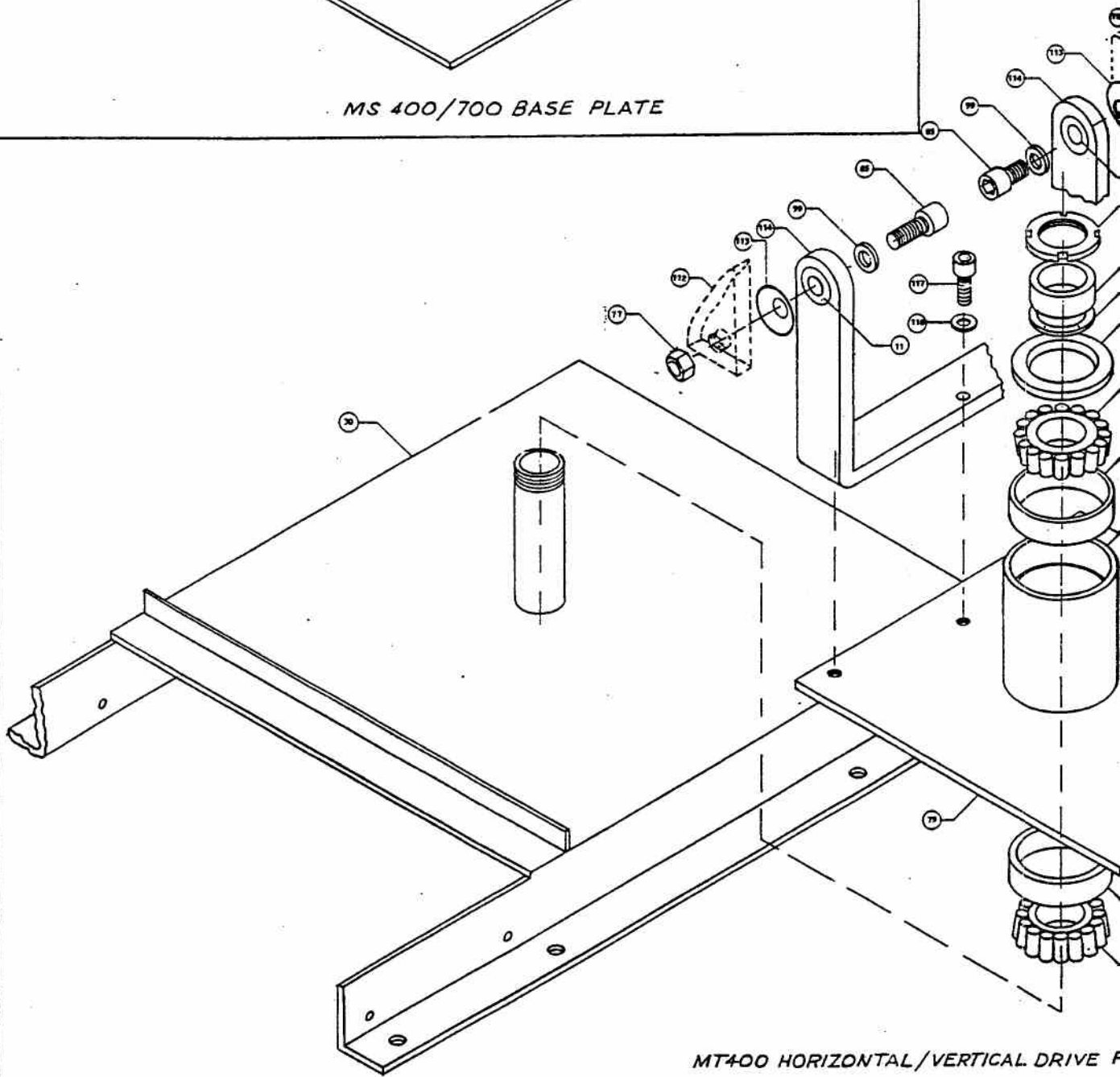
**BEO MAT MS, MJT & MT**

MAKE: NONE DATE: 30 AUG 84 EXPLODED VIEW OF LAUNCHER DRIVE ASSEMBLY	DRAWN BY: <i>Tom Dixon</i> CHECKED BY: RLL DATE: 7-5-87
---	---

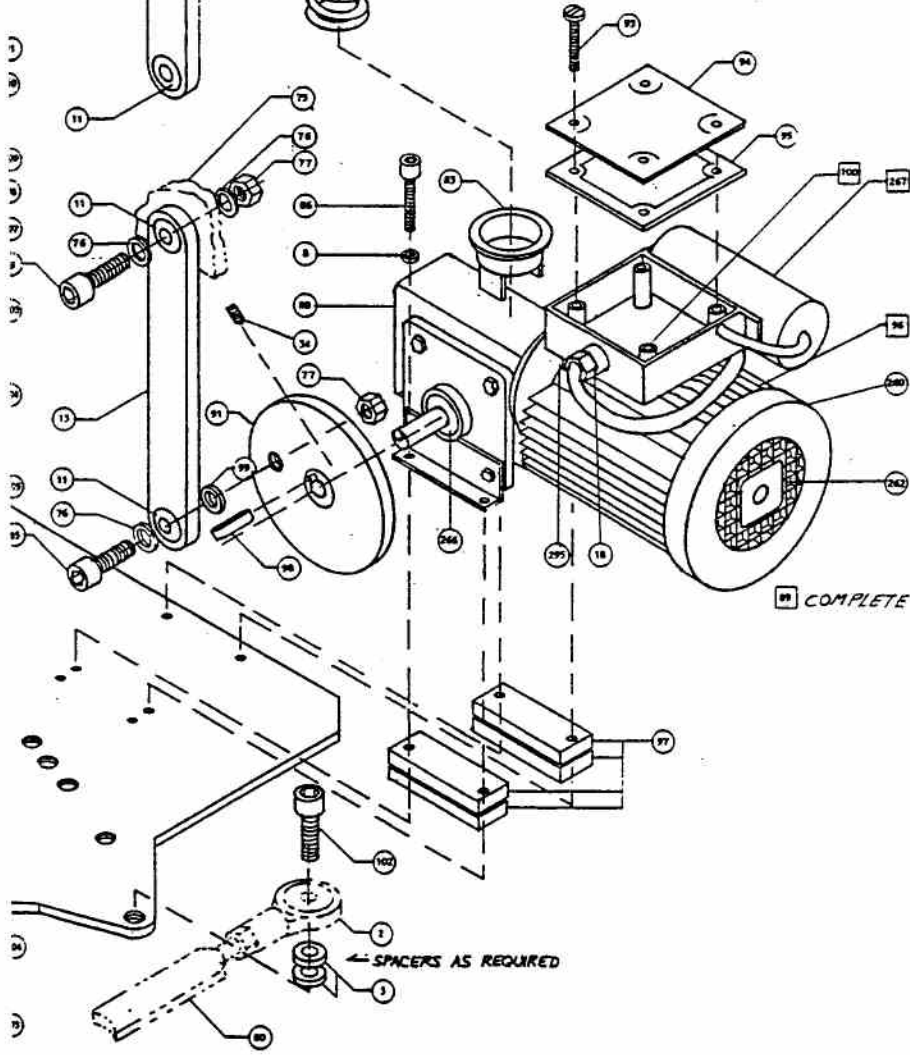
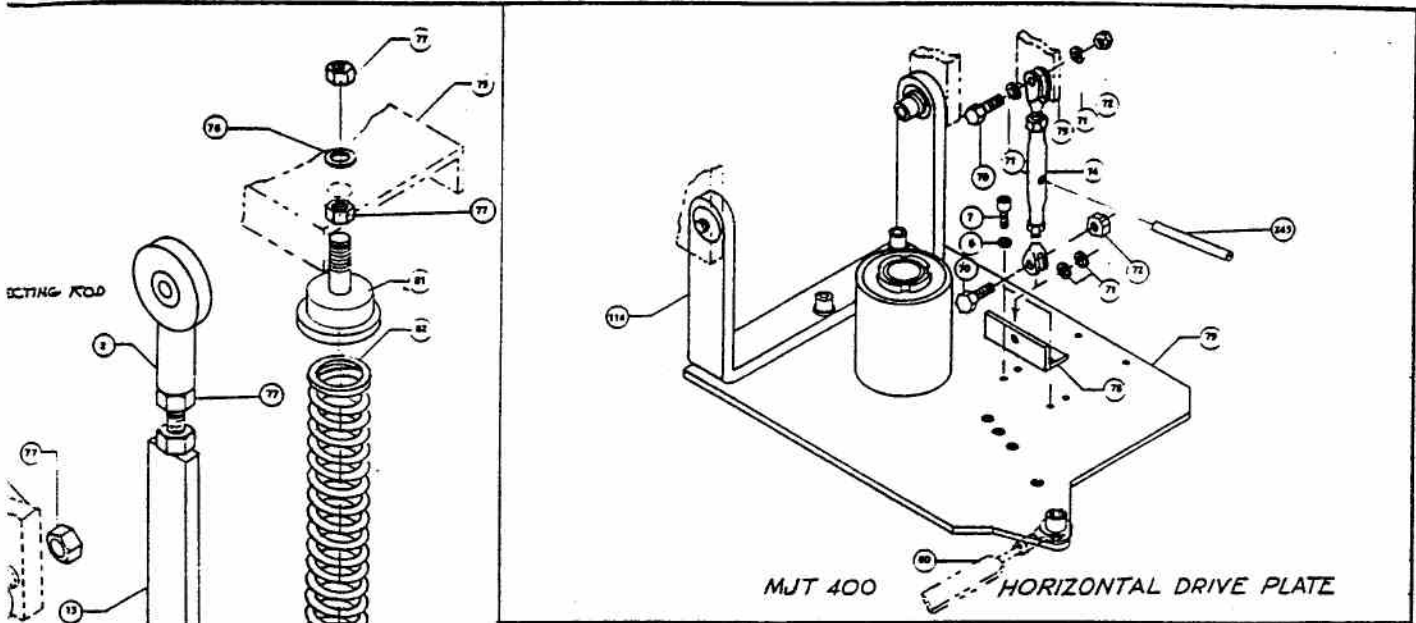


MS 400/700 BASE PLATE

LATE STYLE CE

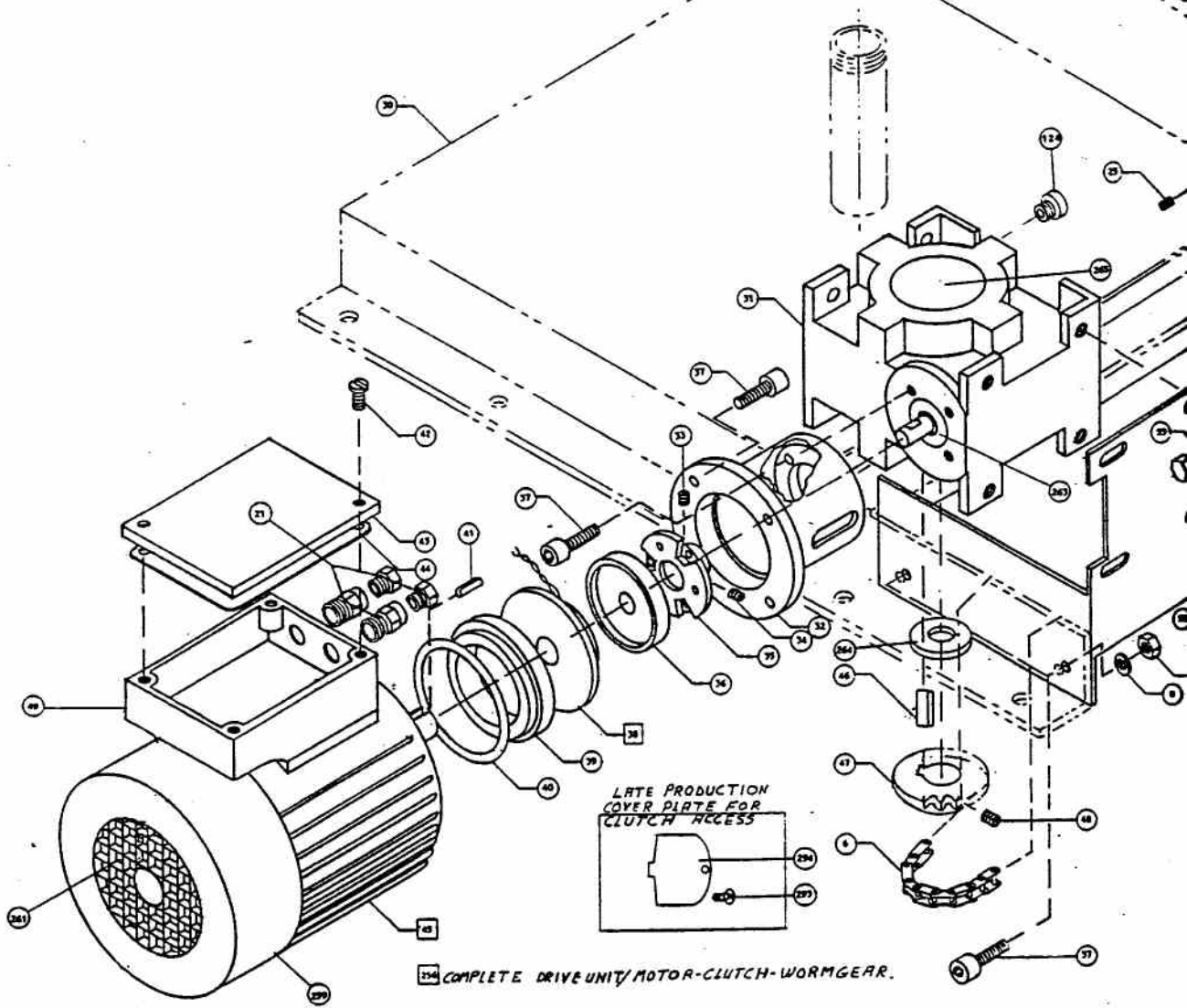
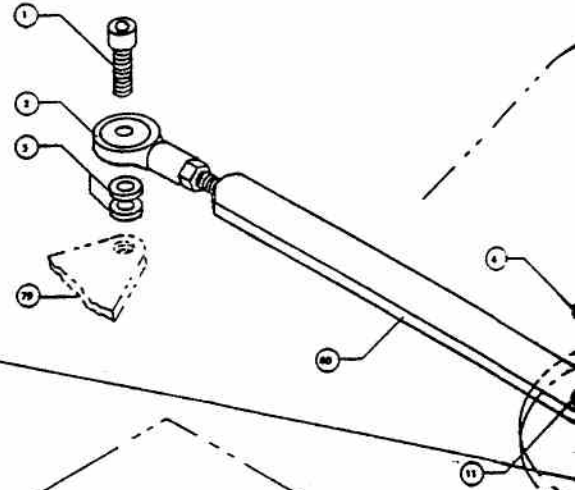
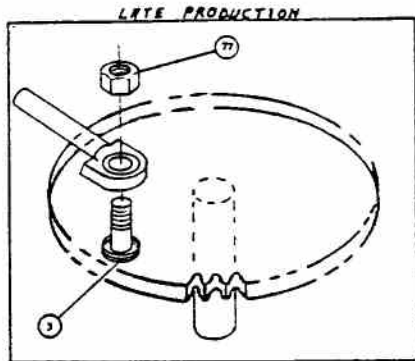


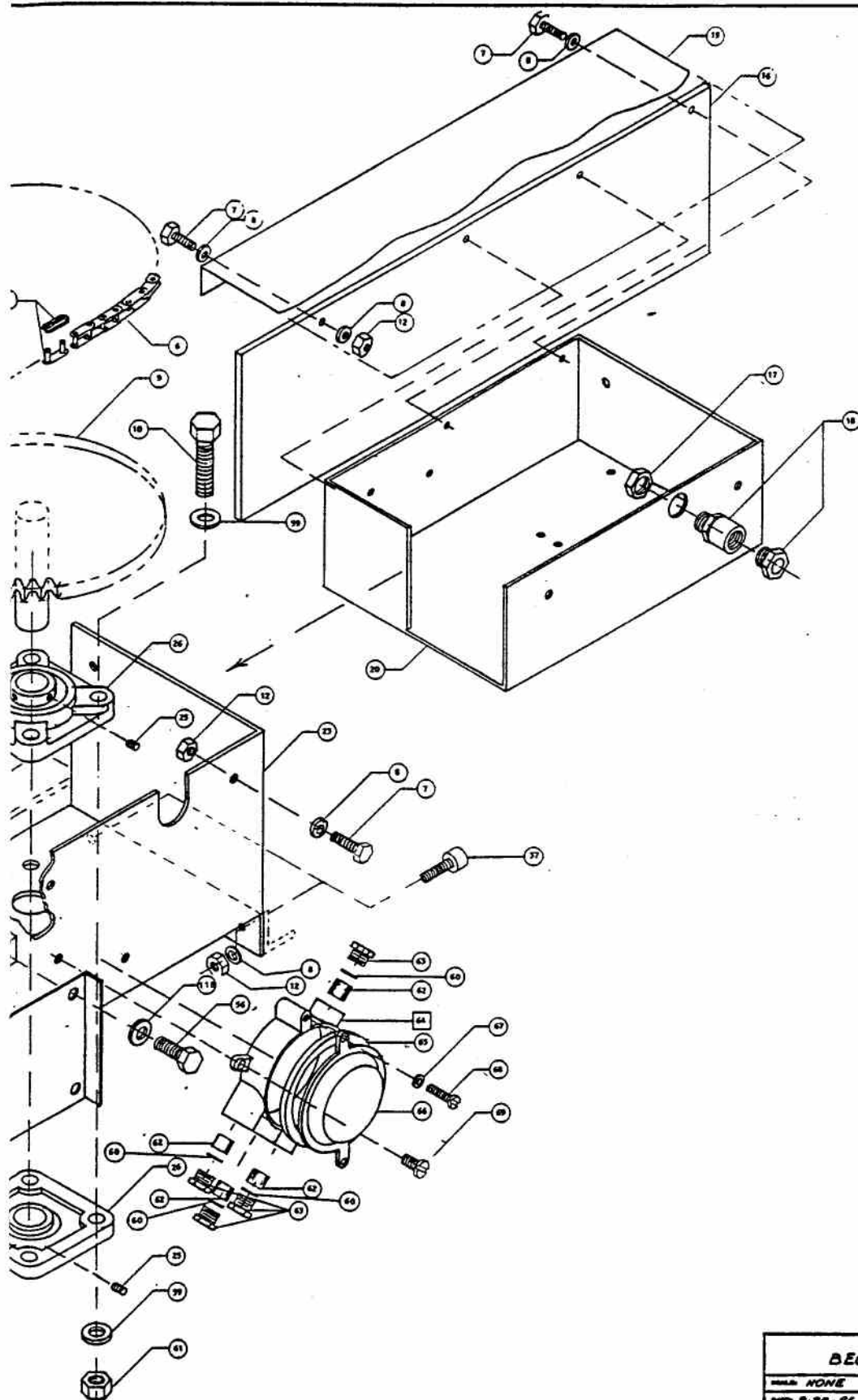
MT400 HORIZONTAL/VERTICAL DRIVE F



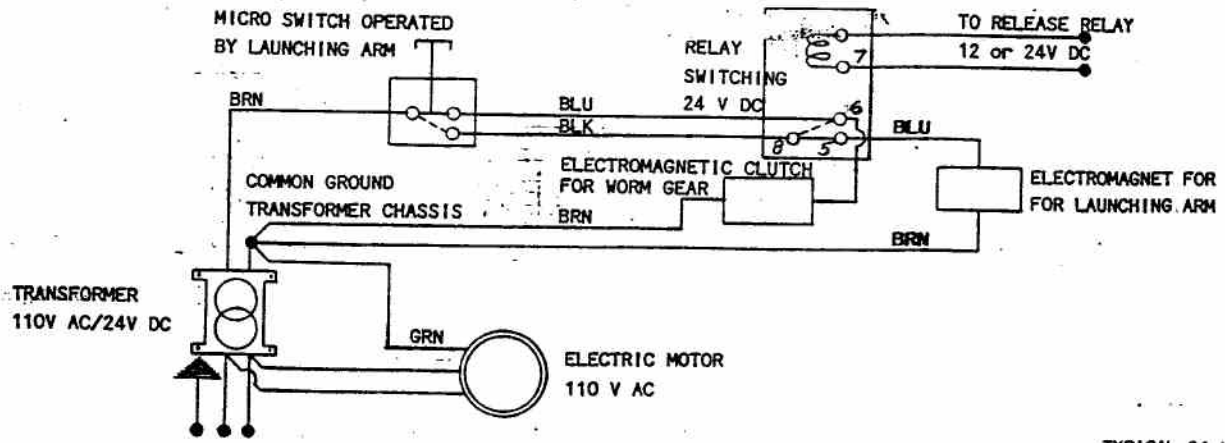
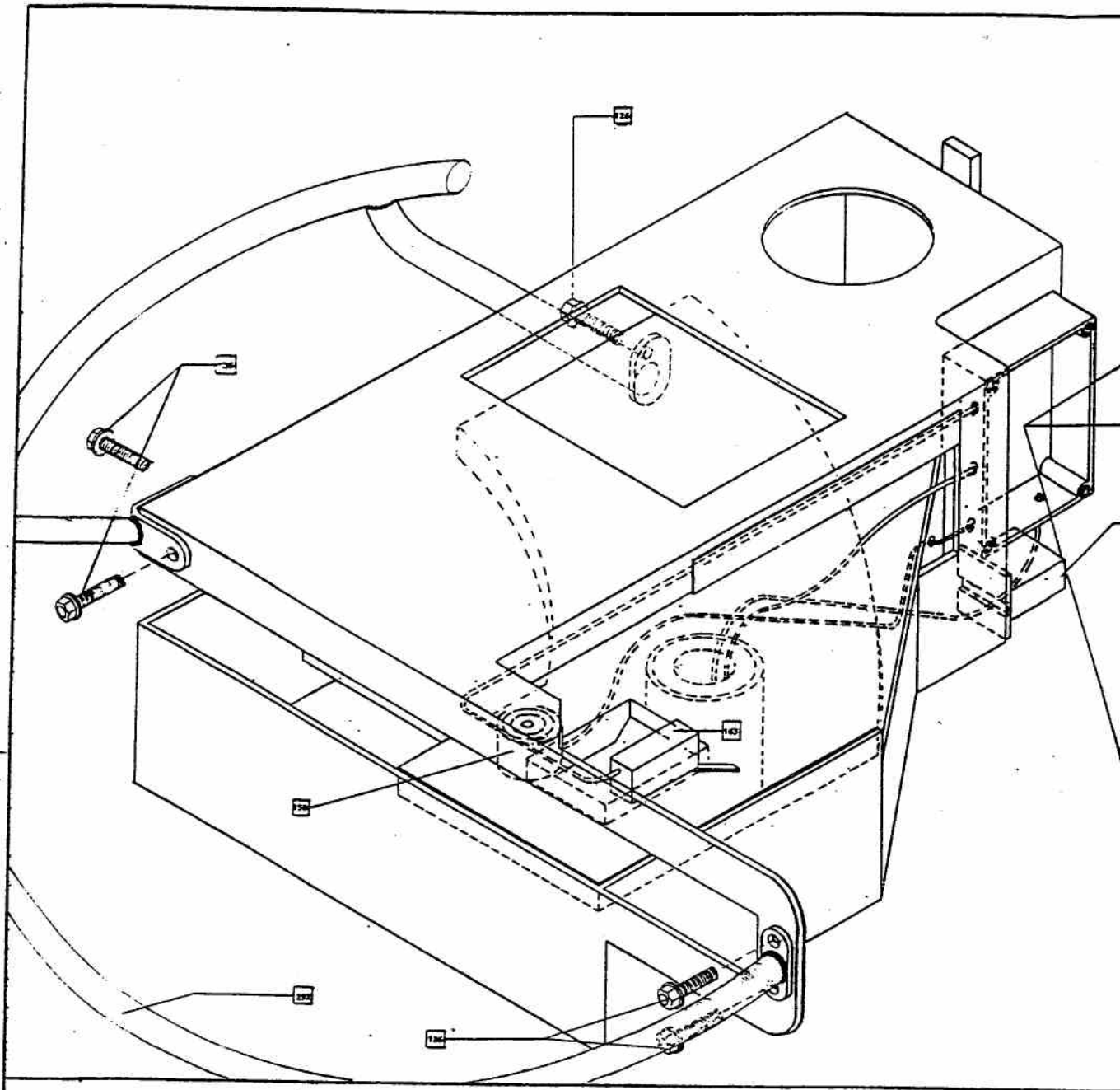
ATE

<b>BEOMAT MT, MJT &amp; MS</b>		
ORIGIN: NONE	DESIGNED BY: <i>Tom Wilson</i>	DATE: 7-5-87
REV: 14 SEP 86		
EXPLODED VIEW OF VERTICAL DRIVE SUBASSEMBLY AND BASE PLATES		
REVISED: 8-1-88	By: Clay Target Enterprises	3





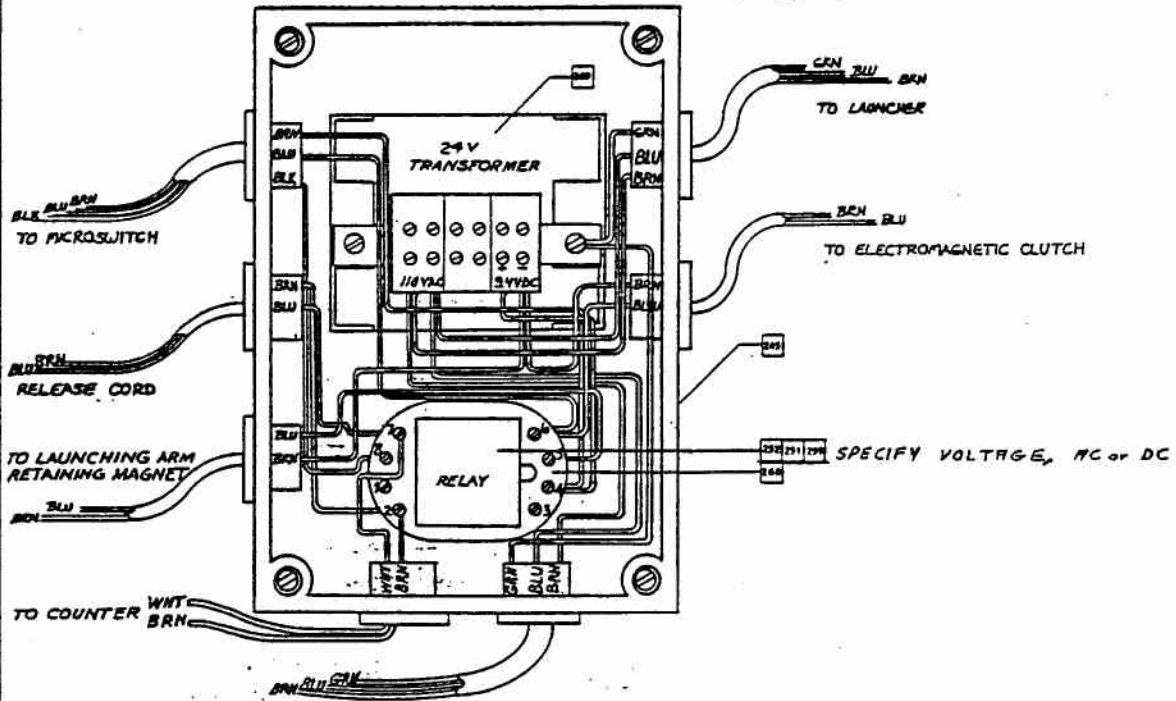
<b>BEMAT MT, MJT 400</b>		
DATE: NONE	APPROVED BY: <i>[Signature]</i>	REVISION: 7-5-97
DATE: 9-28-86		
EXPLODED VIEW OF HORIZONTAL DRIVE SUBASSEMBLY		
REVISED: 6-4-88	By: Clay Target Enterprises	4



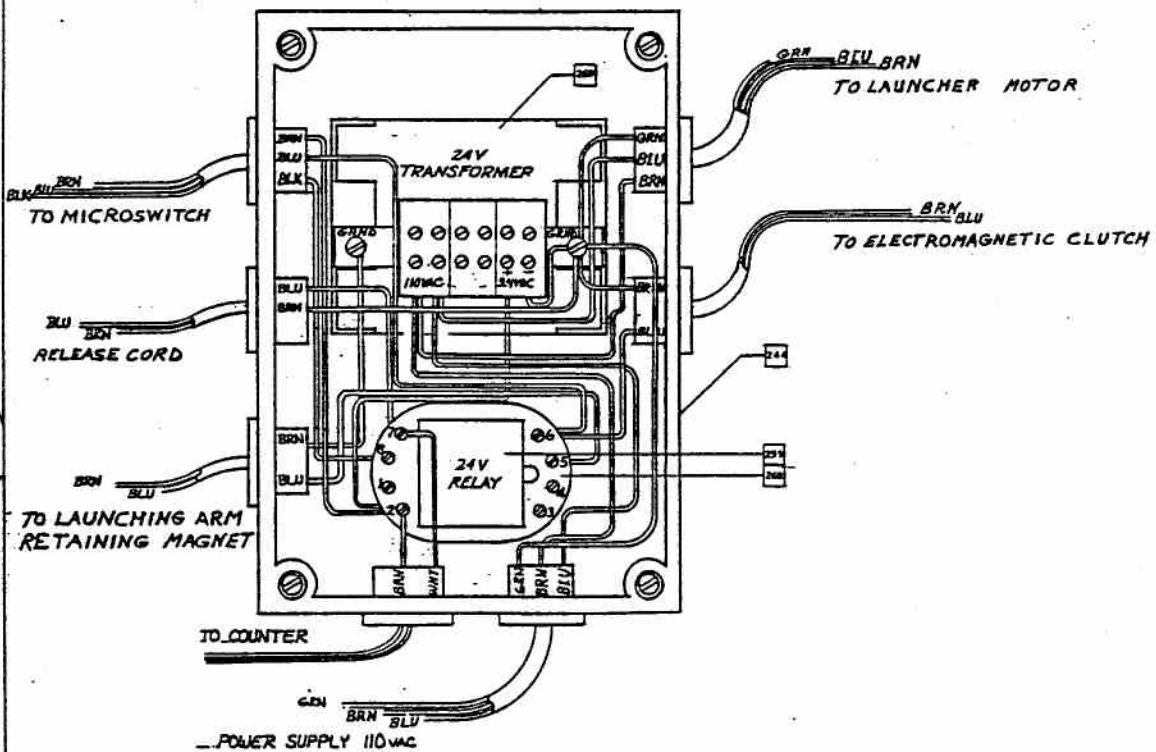
TYPICAL 24 V DC WIRING DIAGRAM FOR LAUNCHING



110 VAC, 12 or 24 V.D.C. SKEET LAUNCHER RELEASE CORD CIRCUIT



24 V.D.C. TRAP LAUNCHER RELEASE CORD CIRCUIT

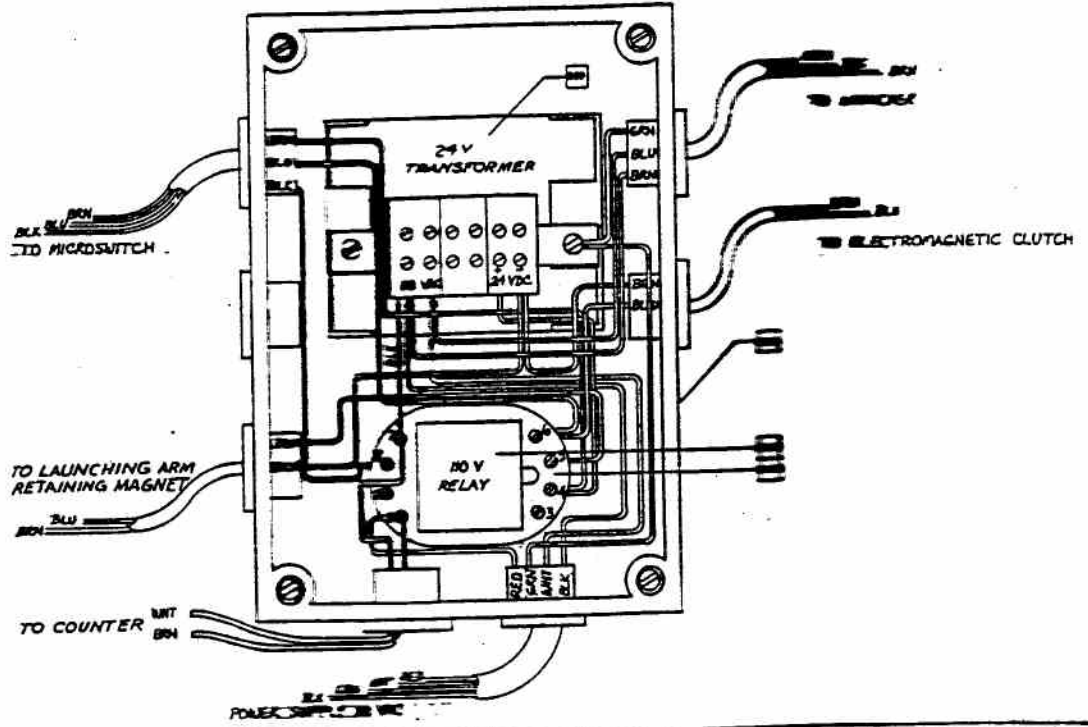


BEOMAT MODELS 700 MS, MT AND  
MODELS 400 MT, MS, MJT

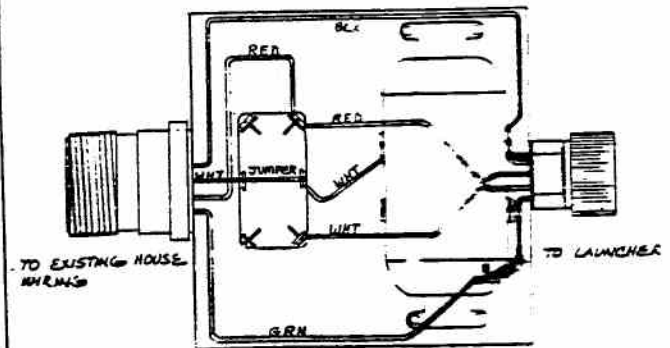
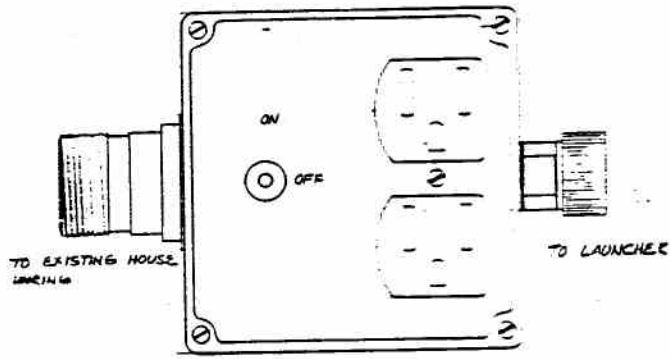
REVISED: NONE	BY: <i>[Signature]</i>	DATE: 16NOV86
---------------	------------------------	---------------

PICTORIAL VIEW, WIRE HARNESS ROUTING,  
ELECTRICAL BOXES

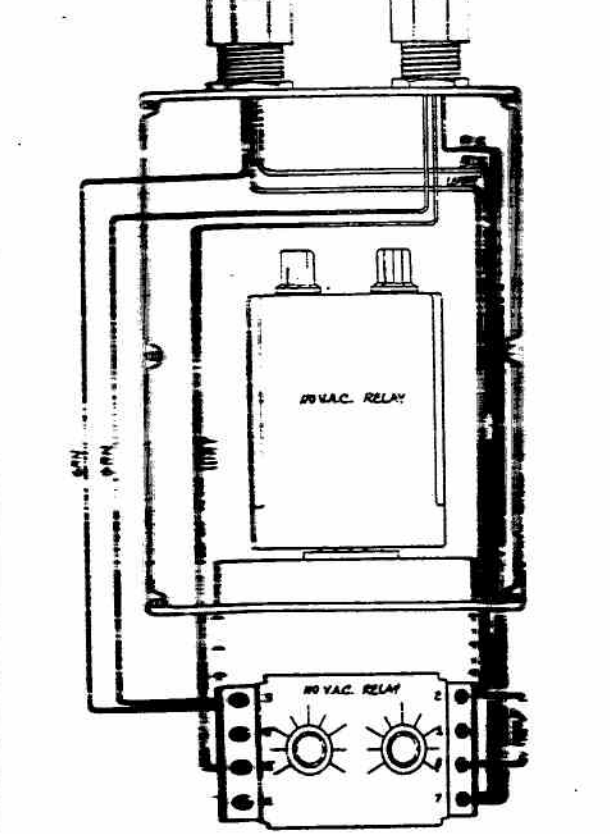
**SINGLE SKEET LAUNCHER** WITH EXISTING 110 VAC SYSTEM.



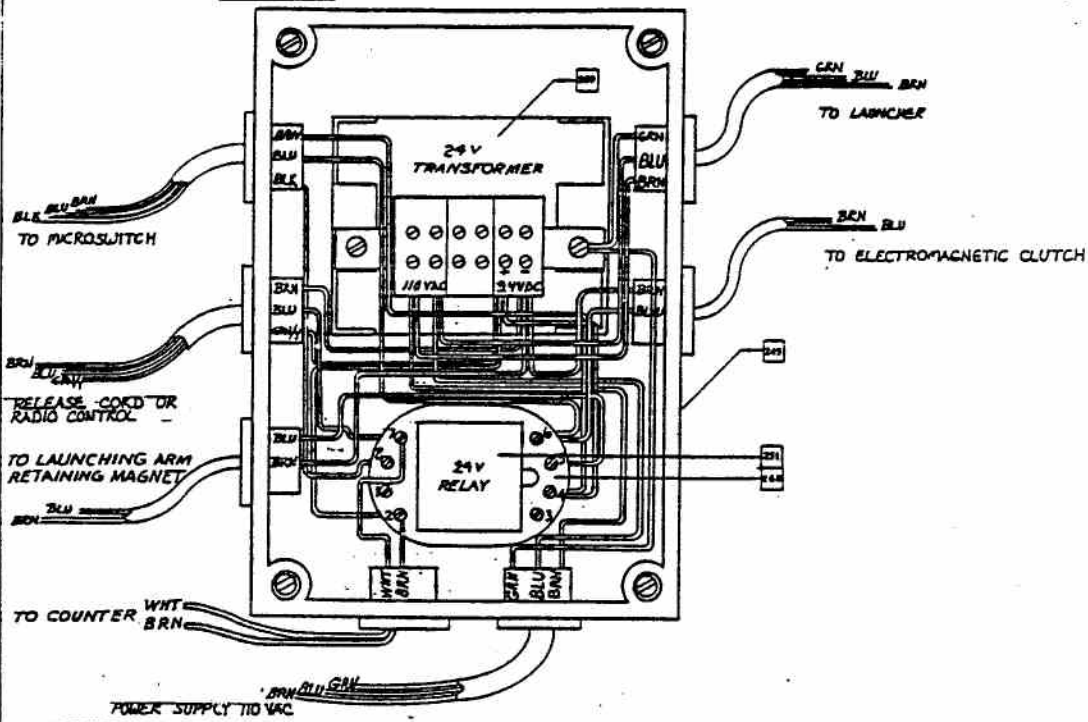
**110 V.A.C. - ON-OFF-RELEASE SKEET**



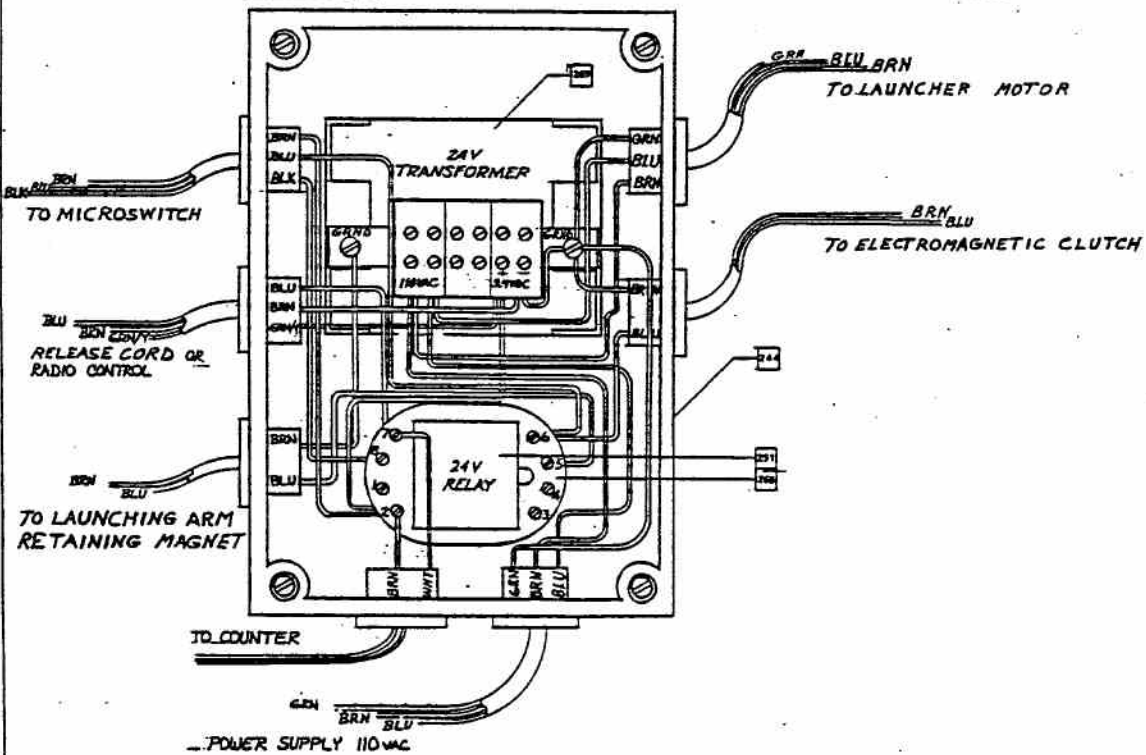
**110 VAC. TIMER (SKEET)**



**24 V.D.C. SINGLE SKEET LAUNCHER** INTERNALLY POWERED RELEASE CIRCUIT (RE-WIRED FOR RADIO CONTROL)

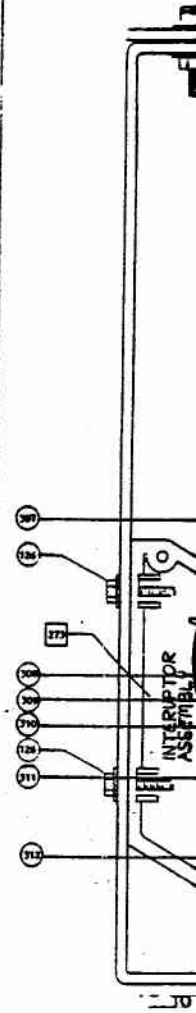
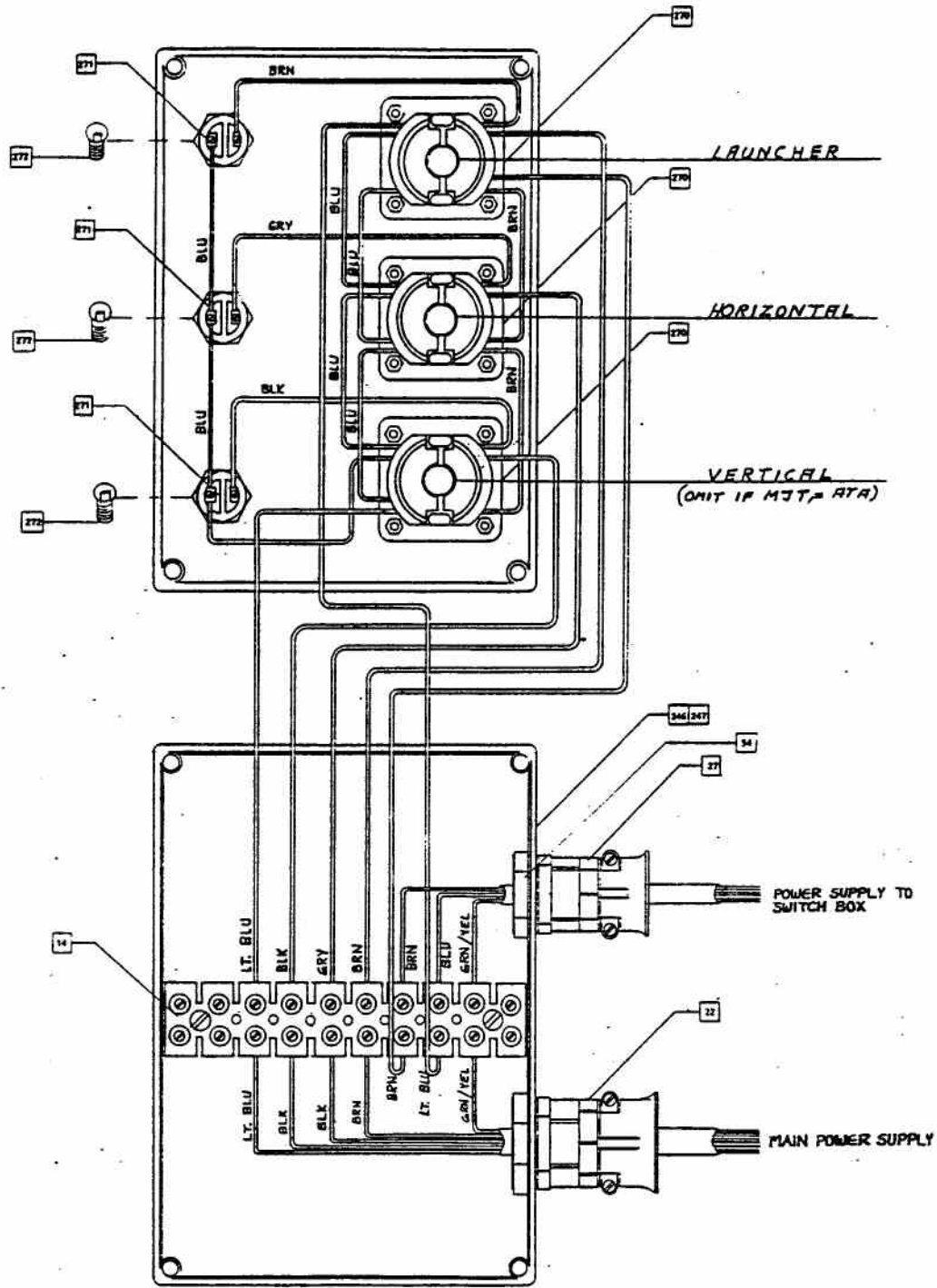


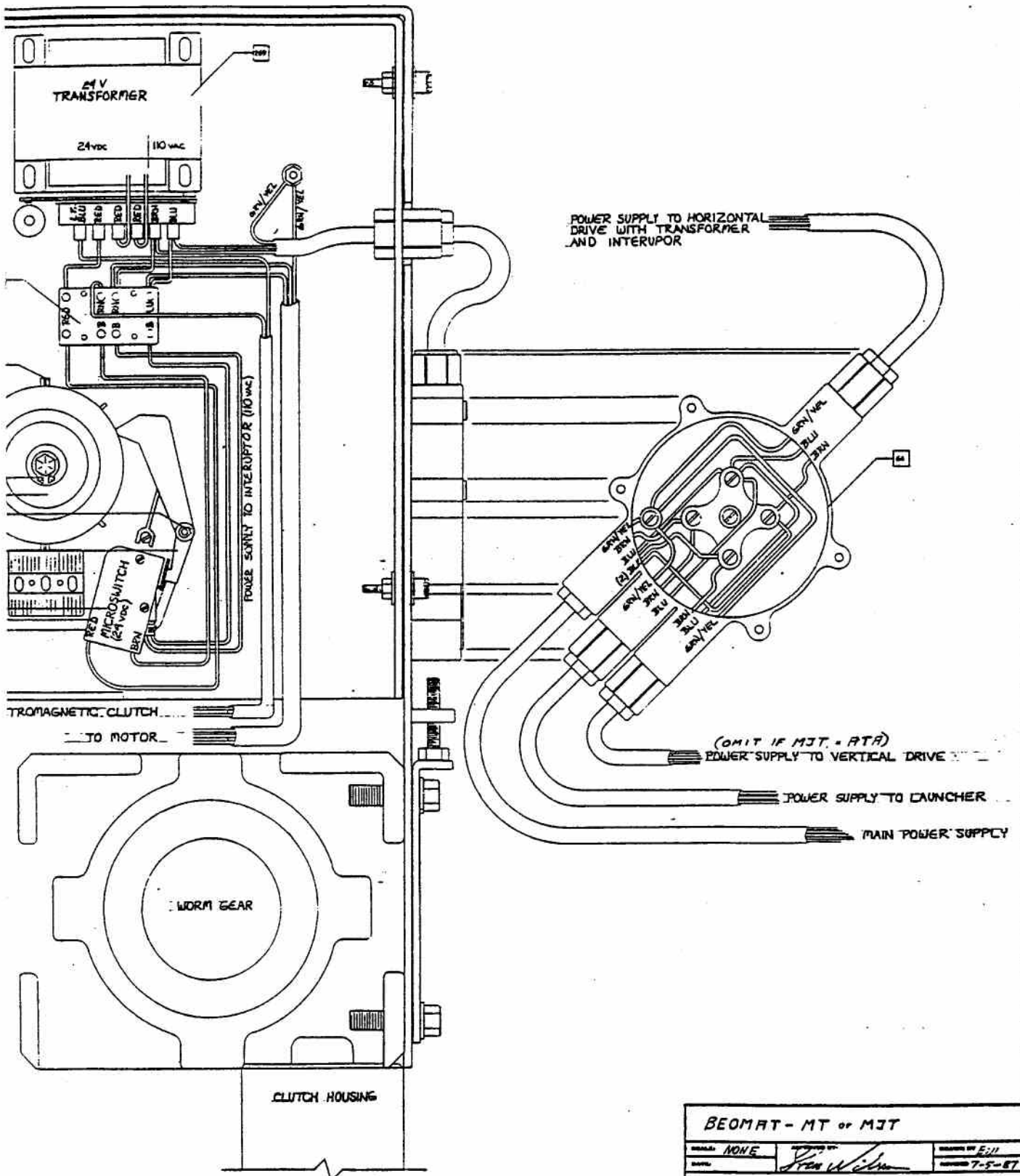
**24 V.D.C. TRAP LAUNCHER** RE-WIRED FOR RADIO CONTROL



BROMAT MODELS 700 MS, MT AND  
MODELS 400 MT, MS, MJT

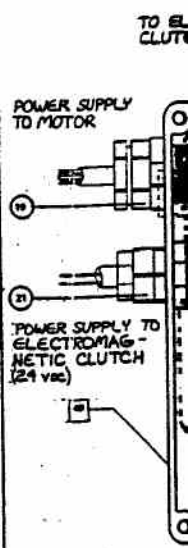
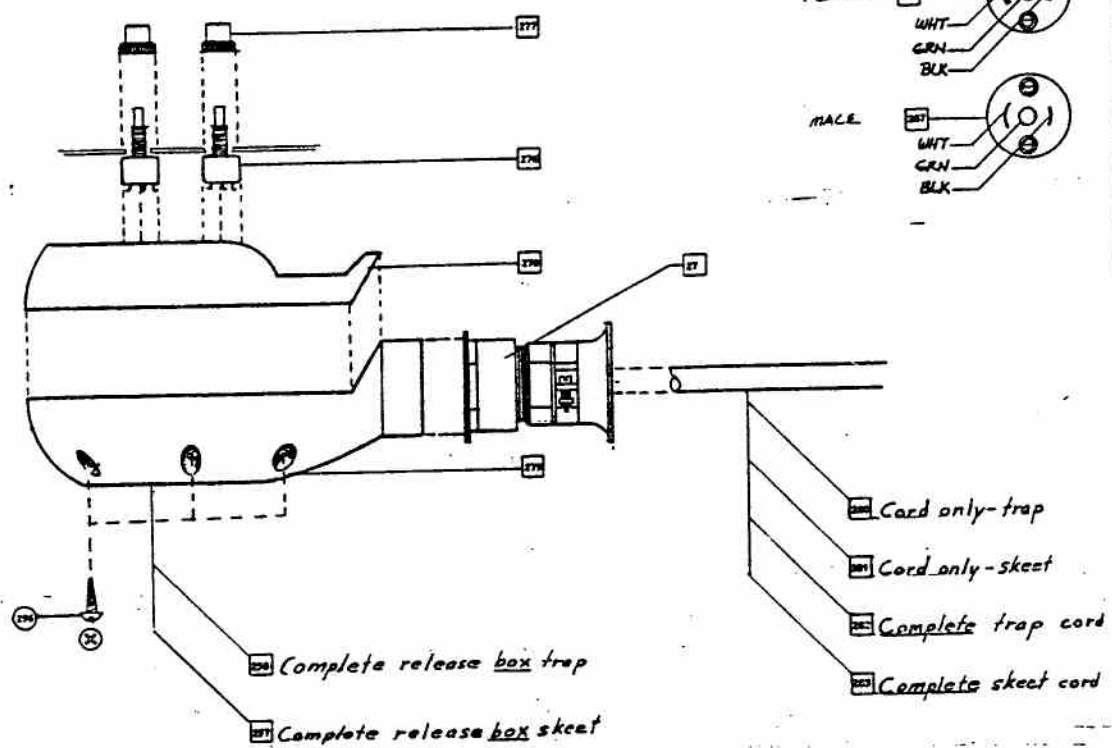
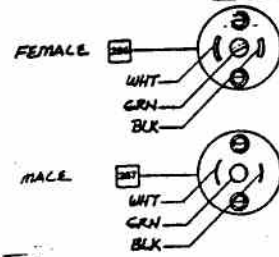
REVISION: NONE  
DATE: 16 NOV '84  
DRAWN BY: *[Signature]*  
CHECKED BY: *[Signature]*  
PICTORIAL VIEW, WIRE HARNESS ROUTING,  
ELECTRICAL BOXES



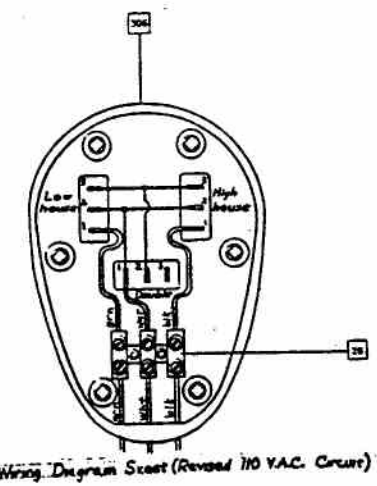
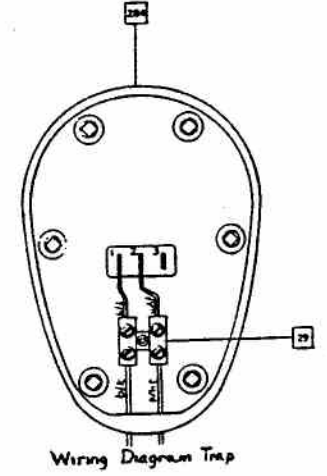
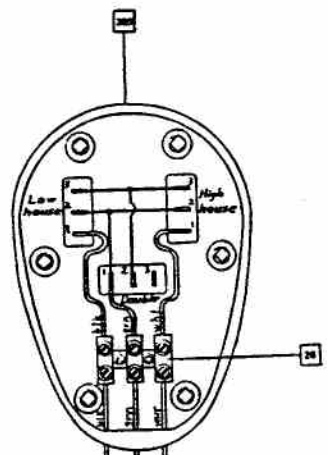
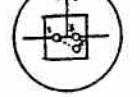


<b>BEOMAT - MT or MJT</b>		
MODEL: <b>NONE</b>	DESIGNED BY: <i>John W. Wilman</i>	DRAWN BY: <b>EJH</b>
DATE:		REVISION: <b>7-5-87</b>
<b>POWER DISTRIBUTION</b>		
REVISED: <b>8-4-88</b>		By: <b>Clay Target Enterprises</b>
		<b>6</b>

Midget twist lock connector



Typical switch



RELEASE CORDS

